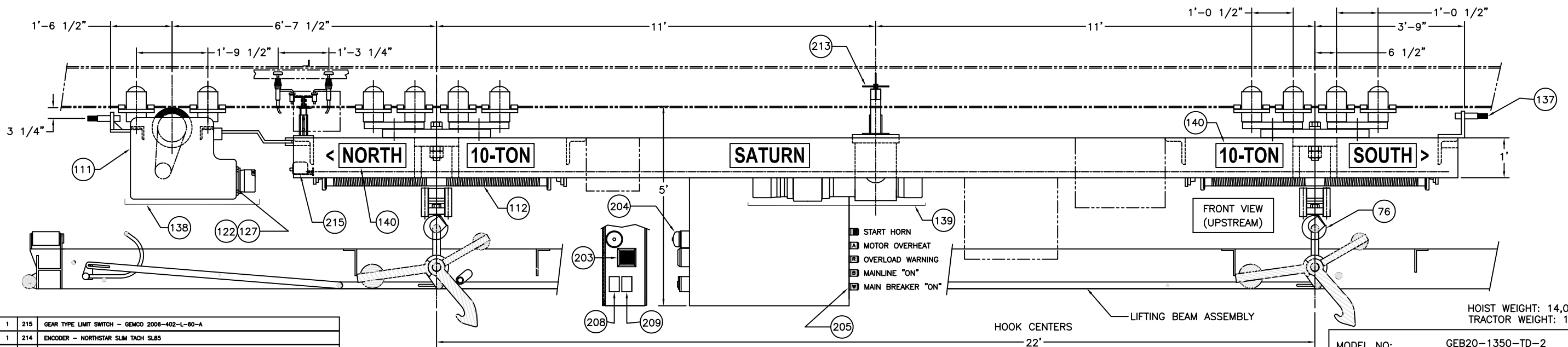
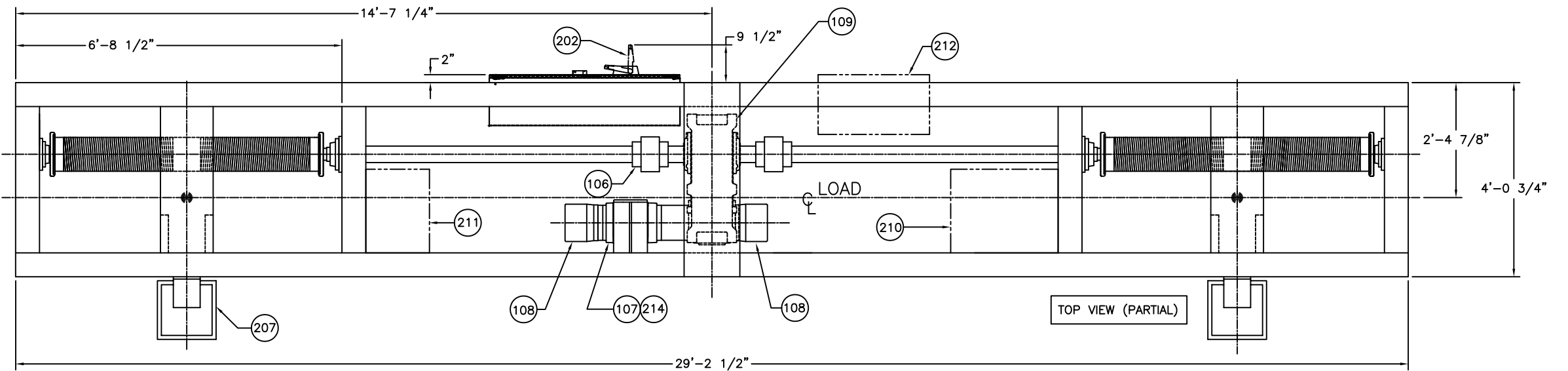
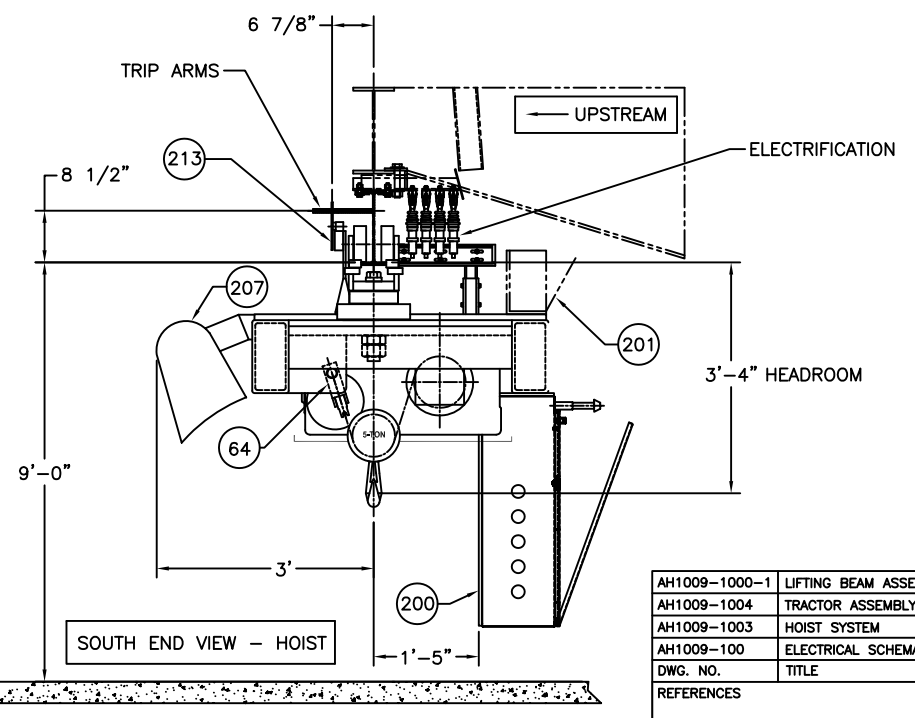
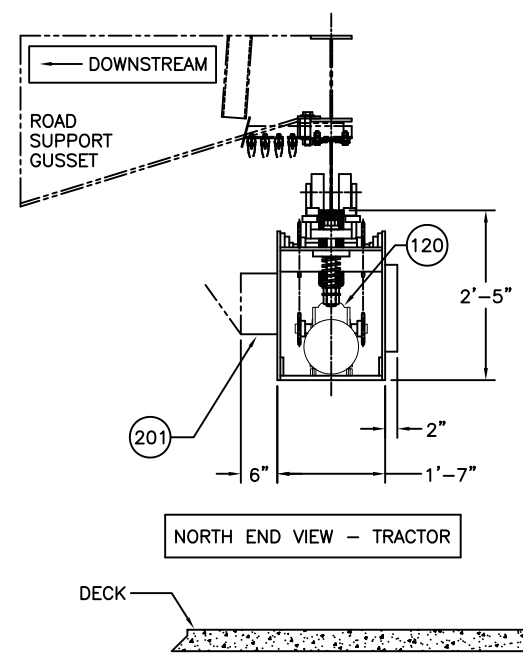


NOTE:  
SYSTEM COMPONENTS  
ARE NOT SHOWN IN ALL  
VIEWS.

SURFACE FINISHES:  
1. HOT DIP GALVANIZED (.004 MIN);  
ALL STRUCTURAL STEEL COMPONENTS;  
FRAMES, STRAPS, BRACKETS, PLATES, ECT.  
2. GRAY EPOXY PAINT; VARIOUS INCLUDING;  
BOTH DRIVES, DRUM SHAFT, UPPER SHEAVE  
ASSEMBLIES & HOOK BLOCK YOKES.  
3. UNPAINTED; DRUM & WHEEL ASSEMBLIES



|  |     |  |
|--|-----|--|
| 1  | 215 | GEAR TYPE LIMIT SWITCH - GEMCO 2008-402-L-60-A                                       |
| 1  | 214 | ENCODER - NORTHSTAR SLIM TACH SL85   |
| 1  | 213 | TRAVEL LIMIT SWITCH - TELEMECANIQUE XOKMR54D1  |
| 1  | 212 | HOIST REGEN RESISTORS - ELECTROMOTIVE 4014FHMLSS                                     |
| 1  | 211 | TROLLEY DRIVE ISOLATION TRANSFORMER - REX DC6H1-P1/E4X                               |
| 1  | 210 | HOIST DRIVE ISOLATION TRANSFORMER - REX DC14H1-P1/E4X                                |
| 1  | 209 | OUTDOOR FLOOD LIGHT SWITCH   |
| 1  | 208 | OUTDOOR RECEPTACLE - 20AMP, 115V, GFCI   |
| 2  | 207 | FLOOD LIGHTS - RAB FXLH400   |
| 2  | 64  | SHEAVE LOAD PIN - TRANSDUCER TECHNIQUES CLP-30K                                      |
| 5  | 205 | AUDIBLE/VISUAL INDICATORS - S & S 700 SERIES; HORN, AMBER, FLASHING RED, BLUE, WHITE |
| 1  | 204 | OVERLOAD WARNING BELL - EDWARDS 340-4N5  |
| 1  | 203 | TROLLEY WARNING HORN - EDWARDS 868-NS  |
| 1  | 202 | DISCONNECT SWITCH - ABB KSFCH4 FLANGE HANDLE   |
| 2  | 201 | JUNCTION BOX - STAINLESS STEEL (NAX) - SAGINAW SCE-1008CHNFS                         |
| 1  | 200 | CONTROL BOX - STAINLESS STEEL (NAX) - HOFFMAN C-SDC483812SSR                         |
| 1  | 120 | TRACTOR REDUCER - CONE DRIVE SIZE HP35, MHU35-3                                      |
| 1  | 127 | TRACTOR BRAKE - STEARNS 56,000 SERIES, 10 FT-LBS                                     |
| 1  | 122 | TRACTOR MOTOR - BALDOR INVERTER DUTY 3HP @ 1750RPM                                   |
| 1  | 109 | HOIST REDUCER - SUMITOMO PX8055P4Y-8BR-140   |
| 2  | 108 | HOIST BRAKES (MOTOR & REDUCER) - STEARNS 87,000 SERIES, 50 FT-LBS                    |
| 1  | 107 | HOIST MOTOR - BALDOR VECTOR DUTY 10HP @ 1770RPM                                      |
| 1  | 111 | SATURN TRACTOR DRIVE: T-200-AT   |
| 2  | 112 | 224FT, 7/16", 6 x 36 INRC STAINLESS STEEL WIRE ROPES (IMPORTED WITH CERTIFICATE)     |
| SET  | 140 | DIRECTION & CAPACITY LABELS; (DOWN STREAM SIDE ONLY)                                 |
| 2  | 76  | 15-TON CROSBY SHANK HOOK   |
| 2  | 106 | GEAR COUPLING - LOVE JOY F-3 1/2   |
| 1  | 139 | DRIP PAN - HOIST DRIVE UNIT  |
| 1  | 138 | DRIP PAN - TRACTOR DRIVE UNIT  |
| 2  | 137 | SHOCK ABSORBER - ACE MC4575-4  |
| BILL OF MATERIAL - MECHANICAL & ELECTRICAL COMPONENTS (PARTIAL AS SHOWN) |     |  |



|                   |                              |
|-------------------|------------------------------|
| MODEL NO:         | GEB20-1350-TD-2              |
| CAPACITY:         | 20,000 LBS                   |
| REEVING:          | 2-PART-DOUBLE                |
| HOIST NORM-SPEED: | 13/5 FPM (FULL LOAD)         |
| HOIST OVER-SPEED: | 20/5 FPM (LIFTING BEAM ONLY) |
| LIFT:             | 50 FT                        |
| TRACTOR SPEED:    | 125/5 FPM                    |
| VOLTAGE:          | 460-3-60                     |
| TRACK:            | W12" x 22# W. CURVE, 4" FLG. |

|   |             |
|---|-------------|
| GENERAL SPECIFICATIONS  |             |
| <b>US Army Corps of Engineers</b>   |             |
| <b>SATURN Overhead Equipment LLC</b><br>ORIGINAL EQUIPMENT MANUFACTURER<br>10 MAIN STREET NEWARK, NJ 17105<br>PHONE (973) 465-0224 FAX (973) 465-4219 |             |
| <b>Advanced Crane Technologies LLC</b><br>LINCOLN CORPORATE CENTER READING, PA 19606<br>11 VANGUARD DRIVE<br>PHONE (610) 582-7203 FAX (610) 582 7208  |             |
| PROJECT REPLACE MONORAIL AND CONDUCTOR BAR<br>GAVINS POINT POWERHOUSE, SOUTH DAKOTA   |             |
| TITLE GENERAL ARRANGEMENT OF 10-TON TWIN HOOK HOIST SYSTEM  |             |
| CUSTOMER ARMY CORP OF ENGINEERS, OMAHA DISTRICT   |             |
| DATE  | 1-29-08     |
| DRG. NO.  | AH1009-1002 |
| REV.  | 4           |

|               |                       |
|---------------|-----------------------|
| AH1009-1000-1 | LIFTING BEAM ASSEMBLY |
| AH1009-1004   | TRACTOR ASSEMBLY      |
| AH1009-1003   | HOIST SYSTEM          |
| AH1009-100    | ELECTRICAL SCHEMATICS |
| DRG. NO.      | TITLE                 |
| REFERENCES    |                       |